

**MAX**

ENGINEERED FOR  
PERFORMANCE



**RE·BAR·TIER**  
**TWINTIER**

Original since 1993, made in Japan

# COMPANY & BRAND

## WHO IS MAX

Since 1942, MAX has been recognized worldwide as a leading manufacturer of high-end industrial tools and office products. MAX product engineers concentrate on developing products with highly innovative and durable features to support the ever-evolving needs of the professionals that use them. The MAX Advantage begins with our R&D, engineering and production teams and ends with our customers. Based on end-user feedback, we continually re-engineer our products to meet real-world demands. Our close working relationships with our customers allow us to stay ahead of industry trends in growing markets.



### Corporate Slogan

**ENGINEERED FOR PERFORMANCE**

Working to create new standards, we have developed a deep familiarity with the people who use our products. This encourages us to think boldly, as we aim to bring the world a unique style of convenience.

World's first Battery Operated Cordless Rebar Tying Tool

**RE-BAR-TIER**

In 1993 MAX developed the world's first battery operated rebar tying tool "RE-BAR-TIER" for the Japanese market and launched in 1995 for European market.

The most advanced Battery Operated Cordless Rebar Tying Tool

**TYWINTIER**

In 2017 MAX launched the 7th generation rebar tying tool, the RB441T TWINTIER. This was the first TWINTIER to enter the market.

## OVER 30 YEARS EXPERIENCE

**RE-BAR-TIER**  
**RB260 - 1993**  
The World's first battery operated Rebar Tying Machine in Japan



**RE-BAR-TIER**  
**RB262 - 1995**  
Launched into Europe

**RE-BAR-TIER**  
**RB392 - 1998**  
Increased tying speed up to 1 sec/tie



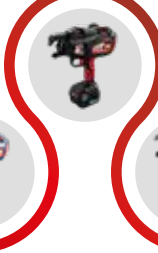
**RE-BAR-TIER**  
**RB395 - 2004**  
Improved durability

**RE-BAR-TIER**  
**RB655 - 2006**  
Mounted DC brushless twisting motor



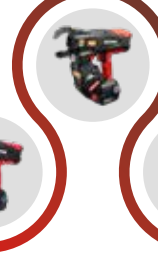
**RE-BAR-TIER**  
**RB397 - 2009**  
Mounted Li-ion battery

**RE-BAR-TIER**  
**RB398 - 2015**  
20th Anniversary of RE-BAR-TIER



**TYWINTIER**  
**RB441T - 2017**  
7th generation model launched in Europe that incorporated evolutionary TWINTIER mechanism

**TYWINTIER**  
**RB611T - 2019**  
Large Jaw model

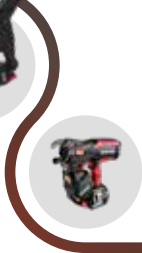


**RE-BAR-TIER**  
**RB398S - 2019**  
Advanced RB398

**TYWINTIER**  
**RB401T-E - 2020**  
Stand-Up model



**TYWINTIER**  
**RB443T - 2024**  
Faster tying model at 0.5 sec /tie



## BENEFIT



Faster



Easy Operation



Increase productivity



Reduce health risk



No Experience Required



# TWINTIER MECHANISM



## KEY FEATURES

### FASTER TIE SPEED

**TWINTIER**

**TWIN WIRE SYSTEM**

Incorporates MAX Twin-Wire System which wraps two wires simultaneously, making a single tie in 0.5 to 0.7 seconds. Single-Wire System wraps one wire three times, making each tie at 0.9 seconds.

**SINGLE WIRE SYSTEM**

### +100% MORE TIE CAPACITY - COIL

**TWIN WIRE SYSTEM**

Approx. 240 ties

TW1061 Wire

**SINGLE WIRE SYSTEM**

Approx. 120 ties

TW898 Wire

TWINTIER can make approx. 240 ties per one coil of wire. REBARTIER can make approx. 120 ties per one coil of wire.

### +1000 TIES MORE CAPACITY - CHARGE

D13 x D13 Rebar combination

**TWIN WIRE SYSTEM**

Approx. 5.000 ties

**SINGLE WIRE SYSTEM**

Approx. 4.000 ties

Both TWINTIER and REBARTIER use the same battery, but TWINTIER can tie 5000 times on a full charge, while REBARTIER can tie 4000 times (1000 less ties).

### +50% TIGHTNESS

Tying Strength (N)

**TWIN WIRE SYSTEM**

**SINGLE WIRE SYSTEM**

### SHORTER TIE HEIGHT BY 50%

24 mm

12 mm

TAIL

NO TAIL

### NUMBER OF TIE/COIL

	RB398S	RB443T	RB611T	RB401T-E
D10+D10	120	265	-	260
D13+D13	120	240	-	235
D16+D16	120	215	205	210
D20+D20	-	180	180	175
D22+D22	-	170	170	-
D25+D25	-	-	155	-
D38+D16	-	-	150	-
D38+D16+D16	-	-	140	-

## RB443T - FASTER TYING MODEL -



### FEATURES

	Wire Feeding Support		0.5sec/tie
	Easy Wire Loading Button		Short Trigger Stroke
	Torque Dial		Maximum 265 ties/coil
	Durable		Equipped Belt Hook

### KEY FEATURE. 1

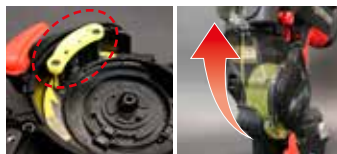
#### Faster Tying Speed



**0.5 sec/tie**

#### MECHANISM

Improved tying operation and increased wire feed speed with new "WIRE FEED SUPPORT" part, which allows even faster tying than the previous RB441T.



### KEY FEATURE. 2

#### Two Ways Loading Wire



1. WIRE LOADING ASSISTANCE



2. MANUAL WIRE LOADING

The WIRE LOADING ASSISTANCE feature added to the RB443T makes wire replacement easier. You can also still use the same manual replacement method as the previous RB441T.

### APPLICABLE REBAR COMBINATION

	MINIMUM Ø2.6×Ø2.6		MINIMUM D10×D10× D10×D10		MINIMUM D10×D10
	MAXIIMUM Ø8×Ø8		MAXIMUM D16×D16× D13×D13		MAXIIMUM D22×D22



Extension Bar Optional



Lift-up Nose Optional

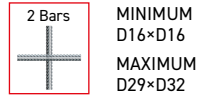
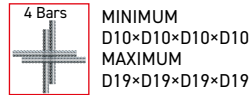
### SPECIFICATIONS

MODEL:	RB443T
WEIGHT:	2.5 Kg Battery included
DIMENSIONS:	H295 × W120 × L330 mm
TYING SPEED:	0.5 sec/tie
WRAPS PER TIE:	2 wraps
TIES PER COIL:	Approx. 170 to 265 ties
TIES PER CHARGE:	Approx. 5,000 ties
BATTERY:	JPL91450A 5.0 Ah Li-ion 14.4 V
CHARGER:	JC925A
BATTERY RECHARGE TIME:	80% capacity - 60min 100% capacity - 80min
APPLICABLE REBAR COMBINATION:	Mesh rebars: Ø2.6×Ø2.6 - Ø8×Ø8 2 rebars: D10×D10 - D22×D22

## RB611T - LARGE JAW MODEL-



Applicable Rebar Combination



Extension Bar Optional

Enables tying larger rebar and conduit



### SPECIFICATIONS

MODEL:	RB611T
WEIGHT:	2.5 Kg Battery included
DIMENSIONS:	H300 × W120 × L350 mm
TYING SPEED:	0.7 sec/tie
WRAPS PER TIE:	2 wraps
TIES PER COIL:	Approx. 140 to 205 ties
TIES PER CHARGE:	Approx. 5,000 ties
BATTERY:	JPL91450A 5.0 Ah Li-ion 14.4 V
CHARGER:	JC925A
BATTERY RECHARGE TIME:	80% capacity - 60min 100% capacity - 80min
APPLICABLE REBAR COMBINATION:	2 rebars: D16×D16 - D29×D32 4 rebars: D19×D19×D19×D19

## RB401T-E - STAND-UP MODEL-



Applicable Rebar Combination



Short Nose Attachment Optional

Tying without bending down reduce strain on the lower back.



### SPECIFICATIONS

MODEL:	RB401T-E
WEIGHT:	4.6 Kg Battery included
DIMENSIONS:	H322 × W408 × L1,100 mm
TYING SPEED:	0.7 sec/tie
WRAPS PER TIE:	2 wraps
TIES PER COIL:	Approx. 180 to 260 ties
TIES PER CHARGE:	Approx. 4,600 ties
BATTERY:	JPL91450A 5.0 Ah Li-ion 14.4 V
CHARGER:	JC925A
BATTERY RECHARGE TIME:	80% capacity - 60min 100% capacity - 80min
APPLICABLE REBAR COMBINATION:	2 rebars: D10×D10 - D20×D20 4 rebars: D13×D13×D13×D13

## TW1061T SERIES TWIN WIRE



# Tiewire for TYINTIER

Patented. EP3326949 / EP3632828 / EP3666702 / RU2675942



30 coils / box



**TW1061T**  
Regular Steel



**TW1061-EG**  
Electro Galvanize



**TW1061-PC**  
Polyester-Coated



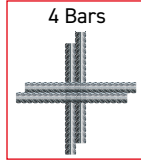
**TW1061-S**  
Stainless Steel



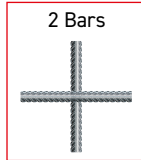
## RB398S - SINGLE WIRE REGULAR MODEL -



Applicable Rebar Combination



MINIMUM  
D10×D10×D10×D10  
MAXIMUM  
D13×D13×D13×D13



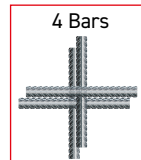
MINIMUM  
D10×D10  
MAXIMUM  
D16×D19

SPECIFICATIONS	
MODEL:	RB398S
WEIGHT:	2.4 Kg Battery included
DIMENSIONS:	H305 × W105 × L290 mm
TYING SPEED:	0.9 sec/tie
WRAPS PER TIE:	3 wraps
TIES PER COIL:	Approx. 120 ties
TIES PER CHARGE:	Approx. 4,000 ties
BATTERY:	JPL91450A 5.0 Ah Li-ion 14.4 V
CHARGER:	JC925A
BATTERY RECHARGE TIME:	80% capacity - 60min 100% capacity - 80min
APPLICABLE REBAR COMBINATION:	2 rebars: D10×D10 - D16×D19 4 rebars: D13×D13×D13×D13

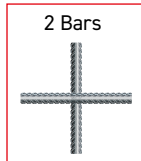
## RB518 - SINGLE WIRE LARGE JAW MODEL -



Applicable Rebar Combination



MINIMUM  
D10×D10×D10×D10  
MAXIMUM  
D13×D13×D16×D16



MINIMUM  
D16×D16  
MAXIMUM  
D22×D25

SPECIFICATIONS	
MODEL:	RB518
WEIGHT:	2.4 Kg Battery included
DIMENSIONS:	H305 × W105 × L305 mm
TYING SPEED:	Approx. 1.0 sec/tie
WRAPS PER TIE:	3 or 4 wraps
TIES PER COIL:	3 wraps: Approx. 90 ties 4 wraps: Approx. 75 ties
TIES PER CHARGE:	3 wraps: Approx. 3,200 ties 4 wraps: Approx. 2,900 ties
BATTERY:	JPL91450A 5.0 Ah Li-ion 14.4 V
CHARGER:	JC925A
BATTERY RECHARGE TIME:	80% capacity - 60min 100% capacity - 80min
APPLICABLE REBAR COMBINATION:	2 rebars: D16×D16 - D22×D25 4 rebars: D13×D13×D16×D16

## RB218 - SINGLE WIRE SMALL JAW MODEL -



Applicable Rebar Combination



MAXIMUM  
φ10×φ10

SPECIFICATIONS	
MODEL:	RB218
WEIGHT:	2.4 Kg Battery included
DIMENSIONS:	H305 × W105 × L270 mm
TYING SPEED:	Approx. 1.0 sec/tie
WRAPS PER TIE:	3 wraps
TIES PER COIL:	Approx. 150 - 210 ties
TIES PER CHARGE:	Approx. 4,600 ties
BATTERY:	JPL91450A 5.0 Ah Li-ion 14.4 V
CHARGER:	JC925A
BATTERY RECHARGE TIME:	80% capacity - 60min 100% capacity - 80min
APPLICABLE REBAR COMBINATION:	Mesh rebars: φ10×φ10

## TW898 SERIES SINGLE WIRE

# Tiewire for RE-BAR-TIER™



50 coils / box



**TW898**  
Regular Steel



**TW898-EG**  
Electro Galvanize



**TW898-PC**  
Polyester-Coated



**TW898-S**  
Stainless Steel

\*Not recommended for use with RB518

# PRODUCTS

## PJRC160 - CORDLESS REBAR CUTTER-



### SPECIFICATIONS

MODEL:	PJRC160
WEIGHT:	7.6 Kg Battery included
DIMENSIONS:	H228 × W100 × L389
CUT SPEED:	3.3 sec/cut
APPLICABLE REBAR:	UP TO 16MM REBAR
CUTS PER CHARGE:	310 Cuts
BATTERY:	JPL92550A 5.0 Ah Li-ion 25.2 V
CHARGER:	JC925A
BATTERY RECHARGE TIME:	80% capacity - 60min 100% capacity - 80min

## STANDARD EQUIPMENT FOR *RE-BAR-TIER* **TVINTIER**



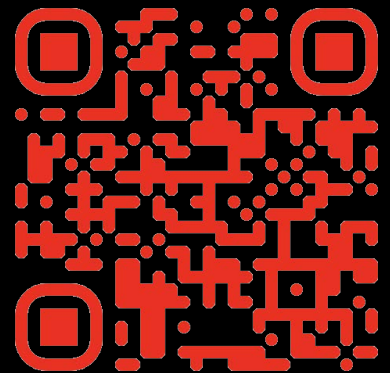
**JC925A**  
Charger



**JPL91450A**  
14.4V 5.0Ah Li-ion Battery  
X 2 PACKS



RB443T Special web site



**RE·BAR·TIER**  
**TWINTIER**

**MAX**

ENGINEERED FOR  
PERFORMANCE

Dealer:

*The specifications and design of the products in this catalogue will be subject to change without advance notice due to our continuous efforts to improve the quality of our products.*